

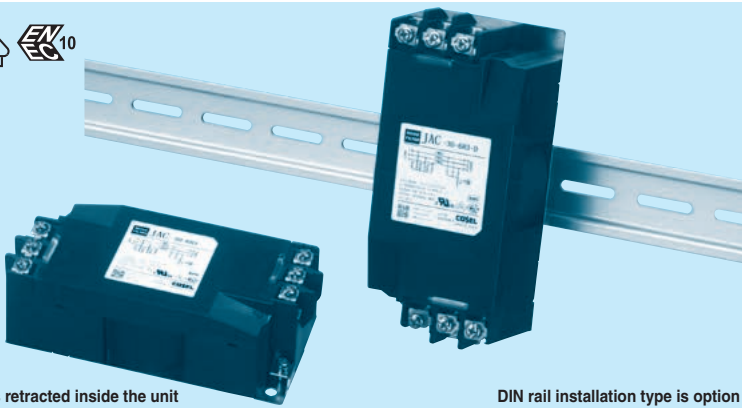
JAC series(6-30A)

JAC -30 -683 -□

① ② ③ ④



RoHS



The terminal cover is retracted inside the unit

DIN rail installation type is option

① Model Name

② Rated Current

③ Line to ground capacitor code: See table 1.1.

table 1.1 Line to ground capacitor code

| Code | Leakage Current (Input 250/500V 60Hz) (Only "224" is 250/400V 60Hz) | Line to ground capacitor (nominal value) |
|------|---|---|
| 103 | 0.5mA / 1.0mA max | 10,000pF |
| 223 | 1.0mA / 2.0mA max | 22,000pF |
| 683 | 2.5mA / 5.0mA max | 68,000pF |
| 224 | 15mA / 24mA max | 220,000pF |

* When the line to ground capacitor code is different, the attenuation characteristic is different.

④ Option

D: DIN rail installation type

* The dimensions change when the option is set. Refer to External view.

H: Ultra high-attenuation type

"103" "223" "683" is applied.

U: Improve differential mode attenuation (Rated voltage 250V)

Features of JAC series

Compact and low profile, common mode EMI/EMC filters in 150kHz to 1MHz (1-stage filter)

- Three Phase 500 VAC
- Push down type terminal block
- Selectable leakage current value, Ultra high-attenuation type "224" for EU (Y type with neutral earth system)

Specifications

| No. | Items | JAC-06-683 | JAC-10-683 | JAC-20-683 | JAC-30-683 |
|-----|--|---|------------|------------|------------|
| 1 | Rated Voltage[V] | AC Three Phase 500 (voltage range: 528 max) 50/60Hz *1 *2 | | | |
| 2 | Rated Current[A] | 6 | 10 | 20 | 30 |
| 3 | Test Voltage (Terminal-Mounting Plate) | 2,500 VAC (Cutoff Current = 100mA), 1minute at room temperature and humidity *3 | | | |
| 4 | Isolation Resistance (Terminal-Mounting Plate) | 500 VDC 100MΩ min at room temperature and humidity *4 | | | |
| 5 | Leakage current 250/500V 60Hz | 2.5mA/5.0mA max | | | |
| 6 | DC resistance | 100mΩ max | 45mΩ max | 15mΩ max | 8mΩ max |
| 7 | Safety agency approval temperatures | -25 to +85°C (Refer to Derating Curve) | | | |
| 8 | Operating temperature | -40 to +85°C (Refer to Derating Curve) | | | |
| 9 | Operating humidity | 20 to 95%RH (Non condensing) | | | |
| 10 | Storage temperature/humidity | -40 to +85°C/20 to 95%RH (Non condensing) | | | |
| 11 | Vibration | 10 to 55Hz, 19.6m/s ² (2G), 3min. Period, 1hour each X, Y and Z axis | | | |
| 12 | Impact | 196.1m/s ² (20G), 11ms Once each X, Y and Z axis | | | |
| 13 | Safety agency approvals | UL1283, CSA C22.2 No.8 (C-UL), DIN EN60939 VDE0565 Teil3-1, ENEC | | | |
| 14 | Case size (without projection) | 63 X 44 X 132 mm (W X H X D) (Option: -D refer to external view) [2.48 X 1.73 X 5.20 inches] (W X H X D) | | | |
| 15 | Weight | 440g max | | | |

*1 Capacitor code "224" : Three Phase Δ-connection 400 (440 max), Y-connection 500 (528 max).

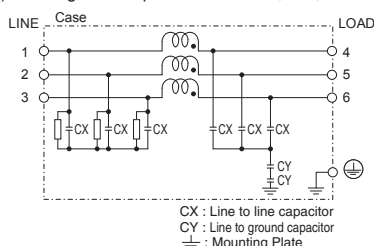
*2 "JAC-□□□□□□□□□□" : Three Phase 250 (275 max).

*3 Capacitor code "224" : 2,800VDC (Cutoff Current = 10mA), 1 minute at room temperature and humidity.

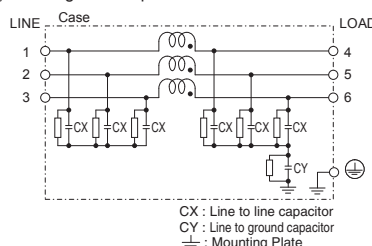
*4 Capacitor code "224" : Isolation resistance specification is deleted.

Circuit Diagram

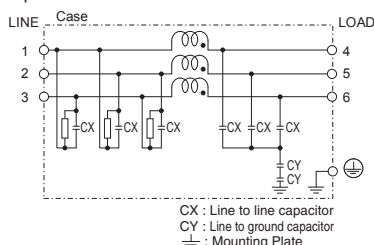
(1) Line to ground capacitor code : 103, 223, 683



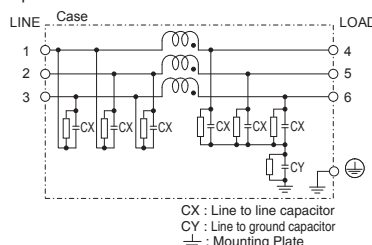
(2) Line to ground capacitor code : 224



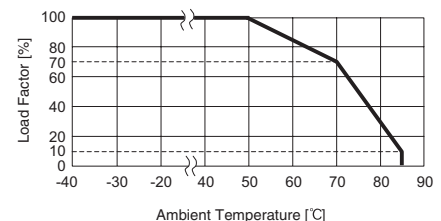
(3) Line to ground capacitor code : 103, 223, 683
Option : U



(4) Line to ground capacitor code : 224
Option : U



Derating Curve

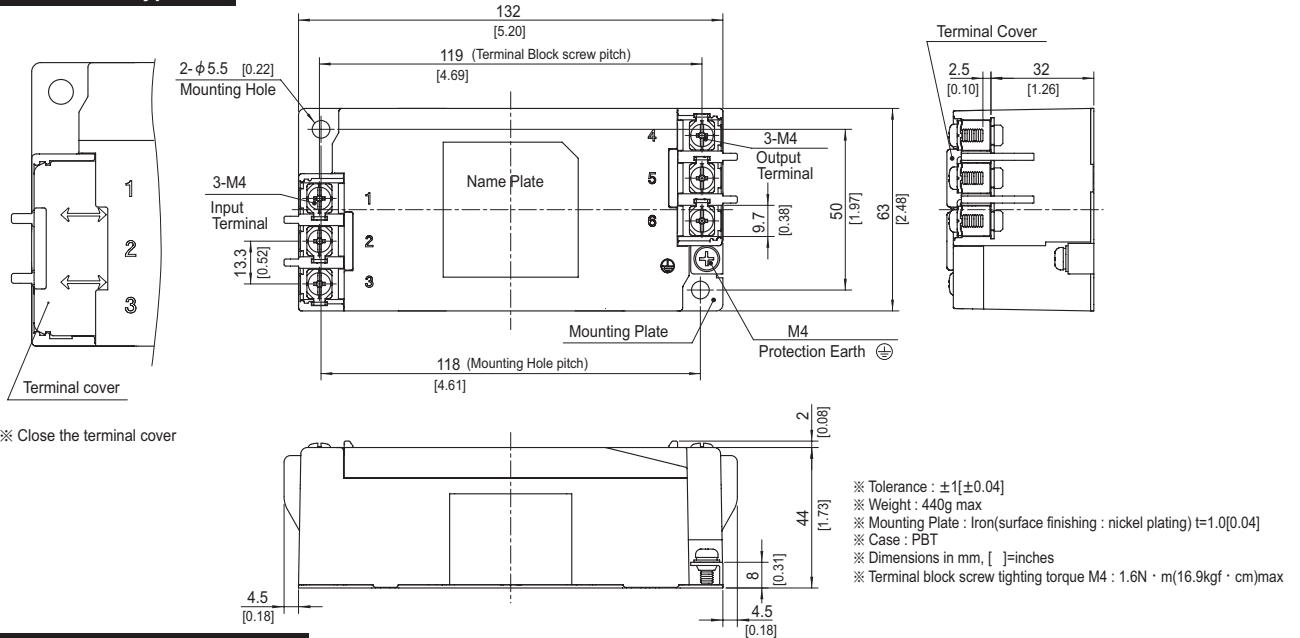


External view

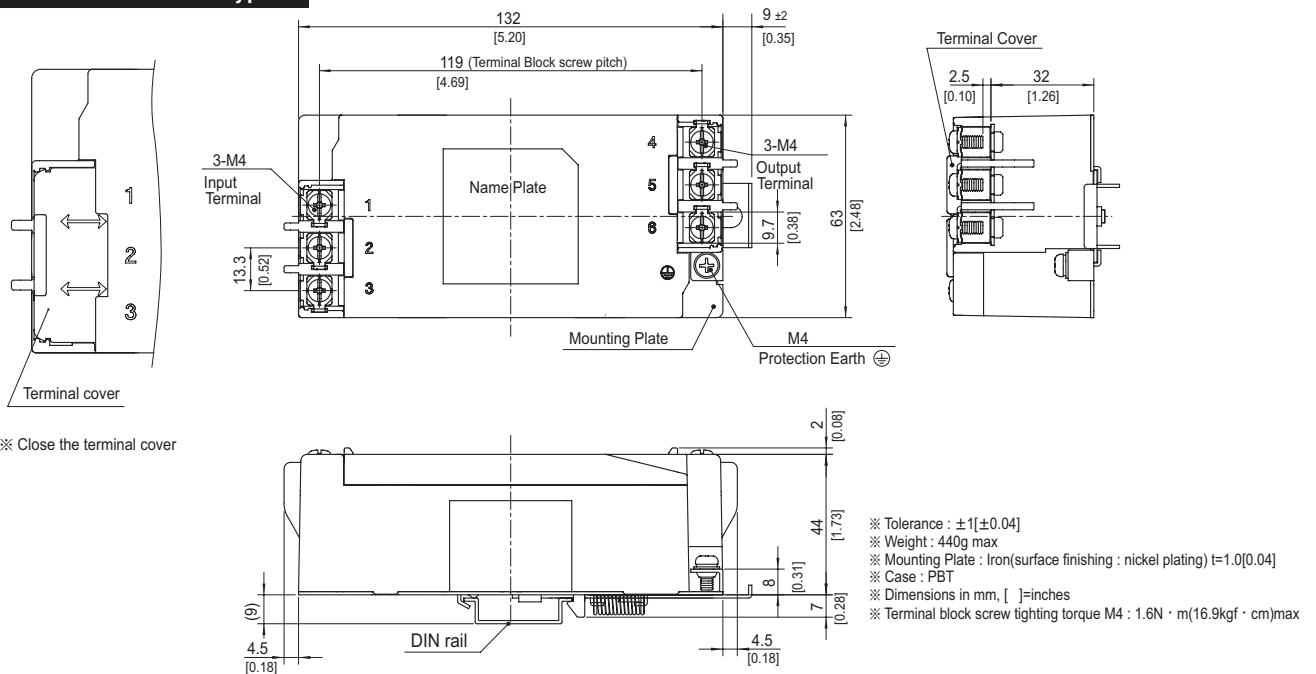
This product is shipped in the following condition, because it is equipped with push-down terminals.

- ①The terminal cover is retracted inside the unit.
- ②The screws for connecting the terminals are held in the up right position.

Standard Type



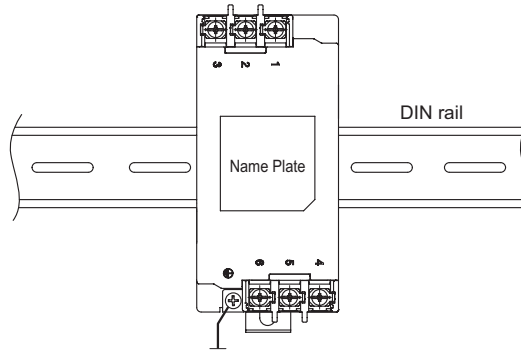
DIN rail installation Type



■Note when installing the EMI/ EMC Filter on a DIN rail.

When the EMI/EMC Filter is grounded through the DIN rail, the proper noise attenuation may not be achieved.

Be sure to connect the protection earth (PE) of the EMI/EMC Filter body to the earth.



JAC series(40,50,60A)

JAC -50 -683 -□

① ② ③ ④



① Series Name

② Rated Current

③ Line to ground capacitor code: See table 1.1.

table 1.1 Line to ground capacitor code

| Code | Leakage Current *1 Upper row : Δ-connection Lower row : Y-connection | Line to ground capacitor (nominal value) |
|------|--|---|
| 103 | 0.5mA / 1.0mA max 0.05mA / 0.1mA max | 0.01μF |
| 223 | 1.0mA / 2.0mA max 0.1mA / 0.2mA max | 0.022μF |
| 683 | 2.5mA / 5.0mA max 0.35mA / 0.7mA max | 0.068μF |
| 224 | 15mA / 24mA max 2.0mA / 4.0mA max | 0.22μF |
| 155 | 80mA / 125mA max 9.0mA / 18mA max | 1.5μF |

* When the line to ground capacitor code is different, the attenuation characteristic is different.

*1 Input 250/500V 60Hz
(Δ-connection of "224", "155" is 250/400V 60Hz)

④ Option

H: Ultra high-attenuation type

"103", "223", "683" is applied.

U: Improve differential mode attenuation
(Rated voltage 250V)

Features of JAC series

Compact and low profile, common mode EMI/EMC filters in 150kHz to 1MHz (1-stage filter)

- Three phase rated voltage 500 VAC (voltage range : 528V max)
- Selectable leakage current value, Ultra high-attenuation type "224", "155" for EU (Y type with neutral earth system)

Specifications

| No. | Items | JAC-40-683 | JAC-50-683 | JAC-60-683 |
|-----|--|---|------------|------------|
| 1 | Rated Voltage[V] | AC Three Phase 500 (voltage range: 528 max) 50/60Hz *2 *3 | | |
| 2 | Rated Current[A] | 40 | 50 | 60 |
| 3 | Test Voltage (Terminal-Mounting Plate) | 2,500 VAC (Cutoff Current = 100mA), 1minute at room temperature and humidity *4 | | |
| 4 | Isolation Resistance (Terminal-Mounting Plate) | 500 VDC 100MΩ min at room temperature and humidity *5 | | |
| 5 | Leakage current 250/500V 60Hz | 2.5mA/5.0mA max | | |
| 6 | DC resistance | 7.0mΩ max | 5.0mΩ max | 3.5mΩ max |
| 7 | Safety agency approval temperatures | -40 to +85°C (Refer to Derating Curve) | | |
| 8 | Operating temperature | -40 to +85°C (Refer to Derating Curve) | | |
| 9 | Operating humidity | 20 to 95%RH (Non condensing) | | |
| 10 | Storage temperature/humidity | -40 to +85°C/20 to 95%RH (Non condensing) | | |
| 11 | Vibration | 10 to 55Hz, 19.6m/s ² (2G), 3min. Period, 1hour each X, Y and Z axis | | |
| 12 | Impact | 196.1m/s ² (20G), 11ms Once each X, Y and Z axis | | |
| 13 | Safety agency approvals | UL60939[Overvoltage Category : III Altitude : 3000m], CSA C22.2 No.8 (C-UL) EN60939(DEMCO)[Overvoltage Category: III Altitude: 3000m] , ENEC | | |
| 14 | Case size (without projection) | 65 X 54 X 153 mm (W X H X D) [2.56 X 2.13 X 6.02 inches] (W X H X D) | | |
| 15 | Weight | 800g max | | |

*2 Capacitor code "224" and "155" : Three Phase Δ-connection 400 (440 max), Y-connection 500 (528 max).

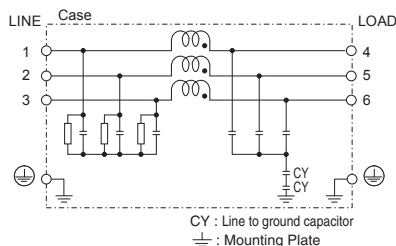
*3 "JAC-□□□□□-U" : Three Phase 250 (275 max).

*4 Capacitor code "224" and "155" : 2,800VDC (Cutoff Current = 10mA), 1 minute at room temperature and humidity.

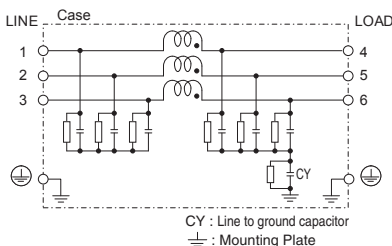
*5 Capacitor code "224" and "155" : Isolation resistance specification is deleted.

Circuit Diagram

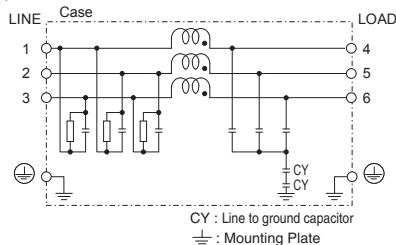
(1) Line to ground capacitor code : 103, 223, 683



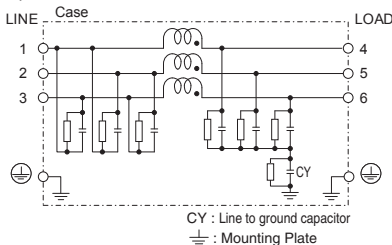
(2) Line to ground capacitor code : 224, 155



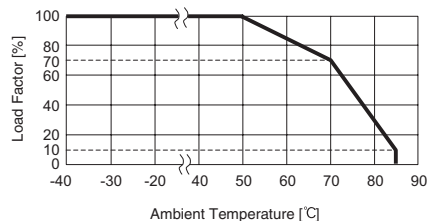
(3) Line to ground capacitor code : 103, 223, 683
Option : U



(4) Line to ground capacitor code : 224, 155
Option : U

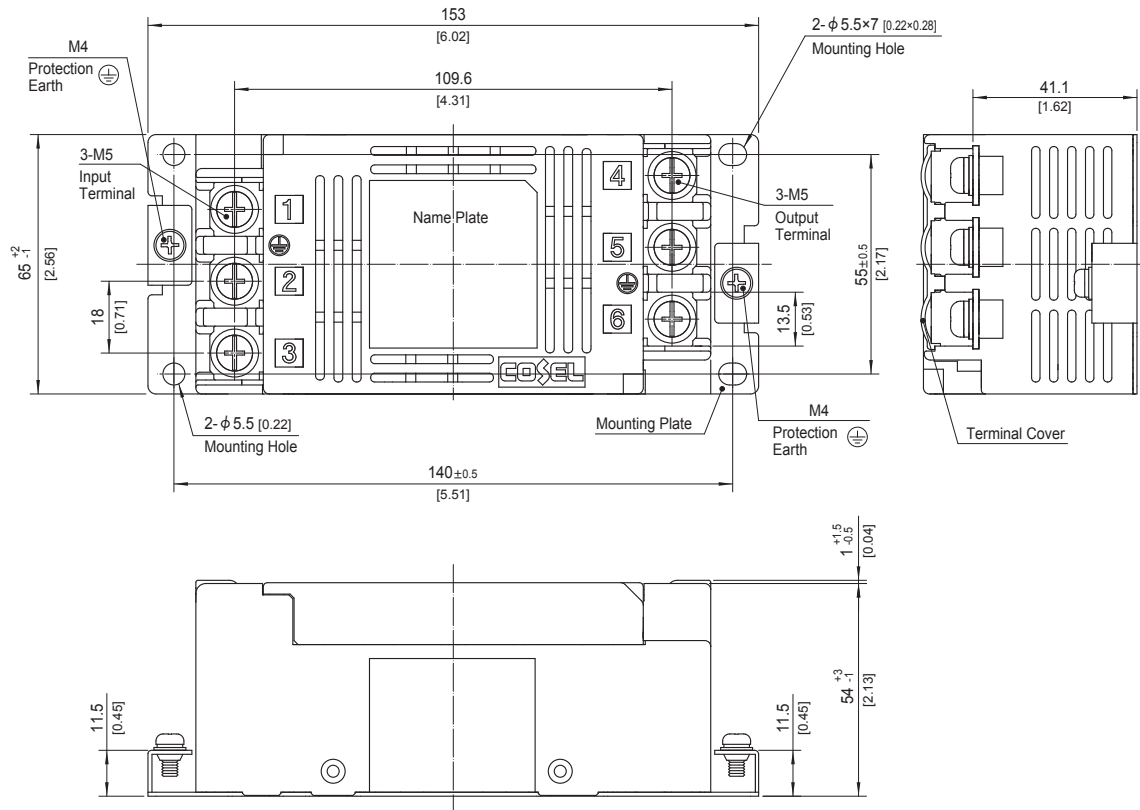


Derating Curve



* Keep free ventilation holes for cooling.

External view



- ※ Tolerance : ± 1 [± 0.04]
- ※ Weight : 800g max
- ※ Mounting Plate : Hot-dip Galvanized Steel board t=1.0 [0.04]
- ※ Case Material : PBT
- ※ Dimensions in mm, []=inches
- ※ Terminal block screw tightening torque M5 : 3.0N · m (30.7kgf · cm) max
- ※ Protection Earth (PE) screw tightening torque M4 : 1.6N · m (16.9kgf · cm) max
- ※ Can not be mounted upside-down. (mounted the top surface)
- ※ Keep free ventilation holes for cooling.
- ※ Can be mounted using the 2 corner mounting holes.