

MTL1000 range

Signal conditioning interfaces



DECLARATION OF CONFORMITY

A printed version of the Declaration of Conformity has been provided separately within the original shipment of goods. However, you can find a copy of the latest version at <http://www.mtl-inst.com/certificates>

CONTENTS


	DECLARATION OF CONFORMITY	II
1	INTRODUCTION	1
1.1	General	1
2	MTL1000 RANGE DESCRIPTION	1
2.1	Modules	1
2.2	Accessories	1
3	INSTALLATION PRECAUTIONS	2
3.1	General	2
3.2	Installation	2
3.2.1	Modules	2
3.2.2	Cabinet and enclosure mounting	2
4	COMMON SPECIFICATIONS	3
5	MODULES	4
5.1	MTL1991 Power feed and alarm module	4
5.2	Current repeaters	4
5.2.1	MTL1141 Transmitter repeater power supply	4
5.2.2	MTL1142 Transmitter repeater power supply with HART	5
5.2.3	MTL1143 Transmitter repeater power supply with HART and repeat output	5
5.3	MTL1171, 1172 Temperature and MTL1173 Potentiometer converters	6
	Table 1 Configuration and DIP switch settings	6
	Table 2 MTL1171 and MTL1172 range DIP switch setting	6
5.3.1	MTL1171 thermocouple input converter	7
5.3.2	MTL1172 RTD input converter	7
5.3.3	MTL1173 Potentiometer input converter	7
5.4	MTL1211 Switch / Proximity Detector input	8
5.5	MTL1249 Current / Voltage input/output repeater	8
	Table 3 MTL1249 Dip Switch settings	9
6	MAINTENANCE	10
6.1	Routine maintenance	10
6.2	Enclosures	10
7	APPENDIX A	11
	Table 3 Isolator current consumption for MTL1991 calculation @ 24V	11

IMPORTANT NOTE

This manual describes the installation and use of:

- MTL1000 range of isolating interfaces and accessories.

The MTL1000 products are designed to provide signal isolation and signal conversion between equipment and areas of a process plant.

WARNING!	
	This equipment must be installed, operated and maintained only by trained competent personnel and in accordance with all appropriate international, national and local standard codes of practice and site regulations for process connected apparatus and in accordance with the instructions contained here.

The following methods are used on the product and in this manual to alert the user to important information:-



Caution - read the instructions



Caution - hot surface

MTL1000 range - signal conditioning interfaces

1 INTRODUCTION

1.1 General

This instruction manual describes the procedures for installing, connecting, checking and maintaining MTL1000 range of isolating interfaces and accessories. The MTL1000 products are designed to provide signal isolation and signal conversion between equipment and areas of a process plant.

Signal isolation eliminates or reduces the risk of earth loops, surges and noise, all of which can result in loss of signal integrity or damage to equipment. In addition, some modules offer the ability to convert signal types to provide level compatibility between system components.

2 MTL1000 RANGE DESCRIPTION

The MTL1000 range of modules and accessories is designed for use with process connected systems. It consists of compact isolating interface modules mounted on 35mm DIN rail. Power is provided through a DIN rail mounted power bus, to which, the isolator module is plugged into when clipped onto the DIN rail. Power is supplied to the isolators via a dedicated power feed module which also provides current limit protection in the event of a fault.

The MTL1000 range modules provide power and status information via LEDs on the top of the module. Where module configuration is required, then switches are accessed by the user through the side cover.

2.1 Modules

The table below lists the modules in the MTL1000 range:

MTL1141	Transmitter repeater power supply
MTL1142	Transmitter repeater power supply with HART passthrough
MTL1143	Transmitter repeater power supply with HART passthrough and repeat output
MTL1171	Thermocouple input converter
MTL1172	Resistance temperature device (RTD) converter
MTL1173	Potentiometer input converter
MTL1211	Switch / Proximity detector input
MTL1249	Signal converter, V/I to V/I
MTL1991	Power feed and alarm module

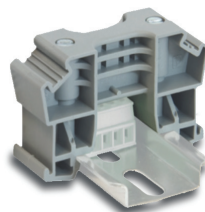
2.2 Accessories

PBUS6.2 DIN rail power bus connector for 2 module positions (pack of 10)

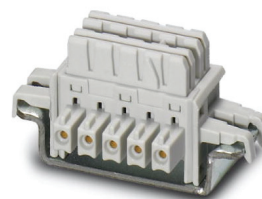
PBUS02 Power bus, direct connection terminals (1 set)

PBUS03 Module end stop

TH1000 Module tagging holder (pack of 20)



PBUS03



PBUS6.2

3 INSTALLATION PRECAUTIONS

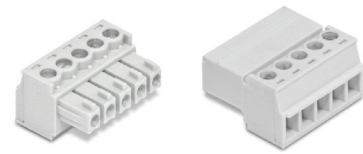
3.1 General

This equipment must be installed, operated and maintained only by trained competent personnel and in accordance with all appropriate international, national and local standard codes of practice and site regulations for apparatus and in accordance with the instructions contained here.

3.2 Installation

3.2.1 Modules

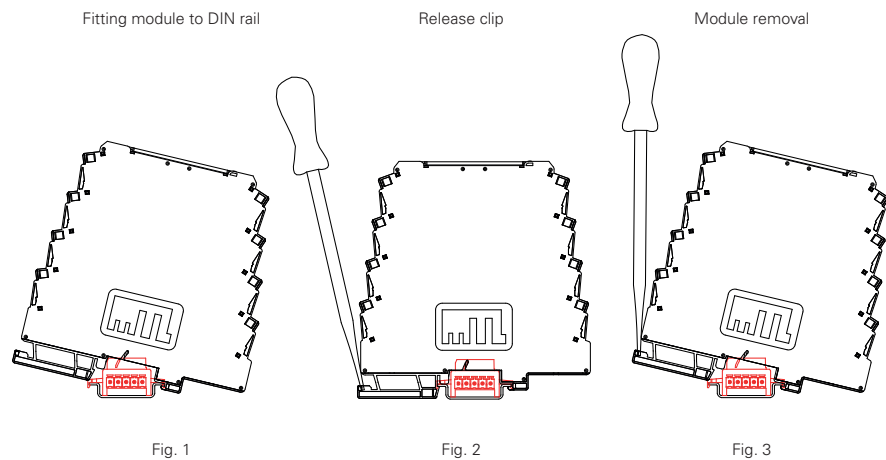
All modules are DIN rail mounted in conjunction with the power bus connector. The power bus must be installed on the DIN first with the required number of slots for the modules that will be fitted. Each power bus connector powers 2 isolators. The MTL1991 power feed module, if used, will occupy one position. This may be located in any position. Power may be connected directly to the bus using the PBUS02 connector set. These are screw terminals that plug directly into the power bus at either end of the bus. The power supply should be of the transformer isolated type to obtain the secondary isolation required for SELV.




PBUS02

Modules are mounted on the DIN rail by clipping the foot, furthest from the release clip, on to the DIN rail first. Rotate the module down onto the DIN rail and clip into place (Fig.1). To release, use a flatbladed screwdriver to release the module clip (Fig 2), hold module and rotate clip upwards. (Fig.3)

3.2.2 Cabinet and enclosure mounting



The MTL1000 modules must be installed in a cabinet or enclosure with an impact rating of at least 6.5J. Consideration must be given to the management of the internal temperatures. Space must be provided around the modules to allow airflow. The optimum transfer of heat is attained when the DIN rail is mounted horizontally but vertical DIN rails may also be used where adequate space is available, especially in larger cabinets. Principle sources of heat, such as power supplies, should be located above the modules. An enclosure depth, measured from the base of the DIN rail, of at least 150mm is recommended. The absolute minimum is 115mm.

	<p style="text-align: center;">CAUTION</p> <p>Exercise care when removing modules in operation from the middle of a group as the surface temperature on the side faces may be hot.</p>
---	---

4 COMMON SPECIFICATIONS

For individual product specifications please refer to individual product specification sheets.

Terminals

Screw clamp. Conductors of up to 13AWG / 1.8mm dia. stranded or single-core copper.

Max torque 0.4Nm to 0.6Nm. Cable insulation strip /ferrule length 6-8mm
PBUS02 use wire type Solid / Stranded, 28 – 16 AWG / 0.14-1.3mm dia, – copper

Power supply voltage

18V to 32V DC SELV (UL listed where UL is applicable)

Isolation

50V ac or dc between power, field and system circuits.
(tested to 840Vac)

Mounting

T-section 35mm DIN rail (7.5mm or 15mm) to EN 50022

Ambient temperature limits

-20 to +60°C (-6 to +140°F) operating

-40 to +80°C (-40 to +176°F) storage

Humidity

5 to 95% relative humidity

Altitude

<2000m

Weight

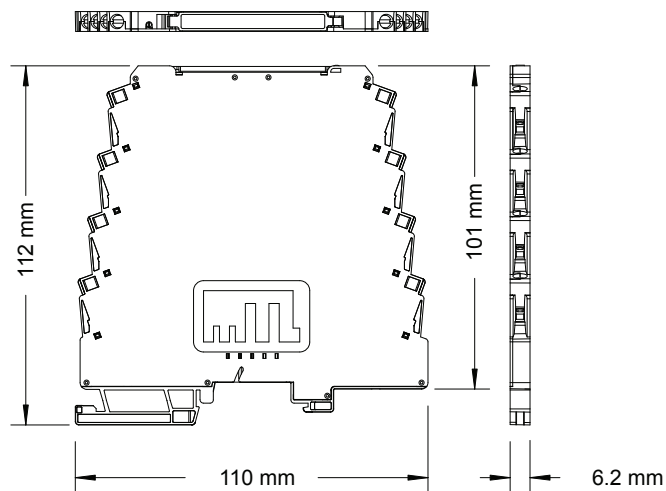
120g

EMC

EN61326 and NE21* Class A equipment

* For 20mS power interruption compliance, a suitable power supply must be used.

Dimensions



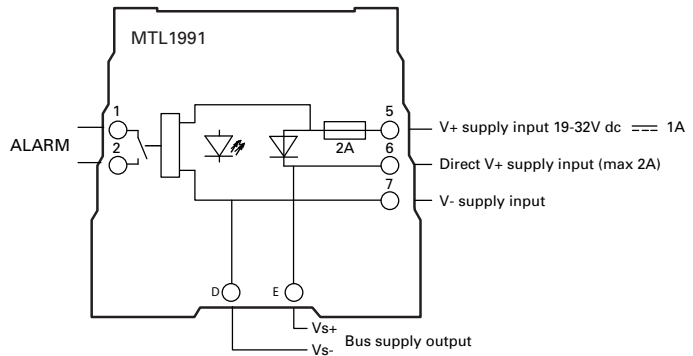
5 MODULES

5.1 MTL1991 power feed and alarm module

The MTL1991 module is required to feed power to a group of MTL1000 range modules via the DIN rail power bus. Each power feed module provides reverse voltage protection and power monitoring. The power monitor relay provides a dry contact output which may be used for connection into a monitoring system or local indicator.

The number of isolators connected to any one power feed module must be assessed for power consumption. The maximum load current when feeding power via terminal 5 is 1A. If redundant power inputs are not required then terminal 6 may be used and a maximum load current of 2 A is acceptable. Check current consumption table in Appendix A for details. If power is fed directly into terminal 6 and external 3A time delay fuse must be fitted. Alarm relay contact rating is 40Vrms ac/dc 0.5A, resistive.

Where redundant power feeds are required, two MTL1991 modules are fitted with one power feed on each. The maximum load current is 1A.



5.2 Current repeaters

5.2.1 MTL1141 transmitter repeater power supply

Before installing this modules check the connection requirements on the 'system' side of the module. The output may be configured to source or sink current. Current source is used when the input to the system is passive, ie there is no power supply present and it presents a resistive load. Current sink is used mainly with a '2 wire' transmitter input to the system where 'loop power' and 'input' terminals are provided. Terminal 6 on the MTL1141 is connected to the transmitter supply, and terminal 5 to the input. See Fig.4. Switch SW1 on the module must be set prior to installation. The module is supplied with the switch set in 'source' mode.

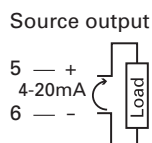
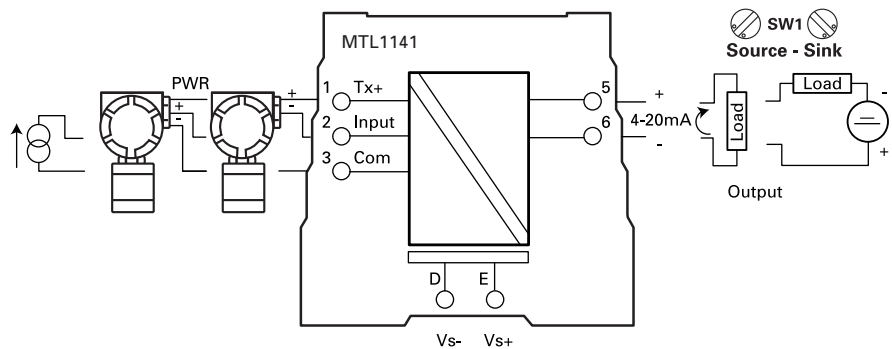


Fig. 4

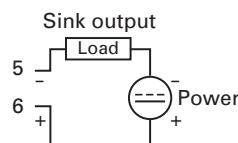
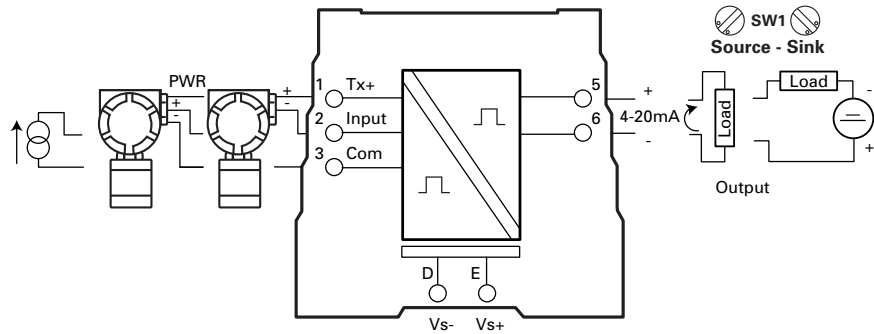


Fig. 5

5.2.2 MTL1142 transmitter repeater power supply with HART

Before installing this modules check the connection requirements on the 'system' side of the module. The output may be configured to source or sink current. Current source is used when the input to the system is passive, i.e. there is no power supply present and it presents a resistive load. Current sink is used mainly with a '2 wire' transmitter input to the system where 'loop power' and 'input' terminals are provided. Terminal 6 on the MTL1142 is connected to the transmitter supply, and terminal 5 to the input. Switch SW1 on the module must be set prior to installation. The module is supplied with the switch set in 'source' mode. HART communications are passed with both settings. In source mode the input impedance on the system input must be $>240\Omega$ for HART compliance.

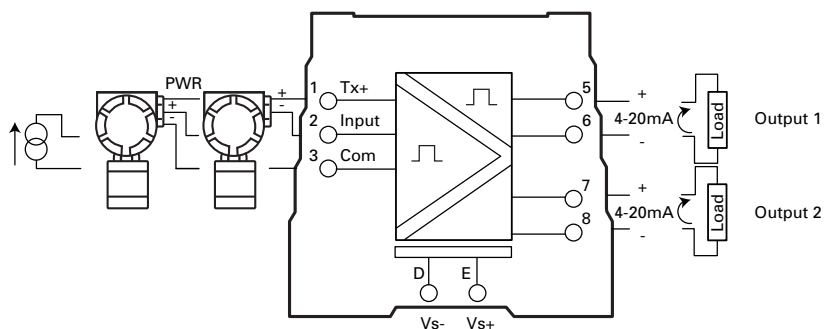


5.2.3 MTL1143 transmitter repeater power supply with HART and repeat output

Before installing this modules check the connection requirements on the 'system' side of the module. Output 1 is configured to source current into a load and provide HART communications passthrough.

Output 2 on terminals 7 and 8 generates a repeat 4-20mA signal to another device. This output provides a 4-20mA 'source' current to the system input. HART communication is not provided via this output.

An active current source may also be applied via terminals 2 and 3. HART communications are not provided when operating in this mode.



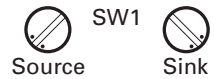
5.3 MTL1171, 1172 temperature and MTL1173 potentiometer converters



The MTL1171, for thermocouples and MTL1172, for RTD, convert low level temperature inputs to 4-20mA. The MTL1173 is for a potentiometer input. Input type and range setting is performed using switches on the side of the module.

The sensor types and wire break detection are selected using switches DS 1-4 and a selection of popular ranges is available using switches DS 6-9. See tables 1 and 2.

Current output, voltage output or current sink output is available on the system terminals by wiring to the appropriate terminals as shown and setting SW1 to the appropriate position.



LED indicators show the power and field input status



Condition	Green (PWR)	Red (STS)
Power ON/ Normal	ON	OFF
Power Low Voltage	OFF	OFF
Field Open circuit	ON	Flashing
Module failure	ON	ON

Table 1 Configuration and DIP switch settings

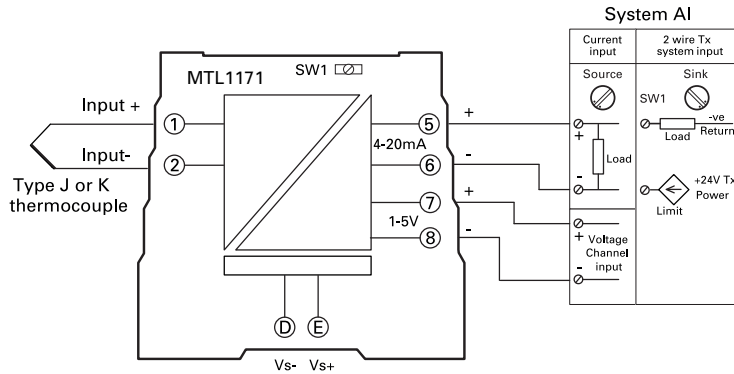
Model	Input type	DS1	DS2	DS3	DS4	DS5
		Type	Wire Break	Wire Break Drive	Trip 1	Trip 2
MTL1171	THC	J Off / K On	ON/OFF	ON = Upscale OFF = Downscale	N/A	N/A
MTL1172	RTD	4W Off 3W On				
MTL1173	POT	-				

Table 2 MTL1171 and MTL1172 range DIP switch setting (0 off, 1 on)

Range THC/RTD	DS6	DS7	DS8	DS9	DS10
0 to 100°C	0	0	0	0	-
0 to 150°C	0	0	0	1	-
0 to 200°C	0	0	1	0	-
0 to 350°C	0	0	1	1	-
0 to 500°C	0	1	0	0	-
0 to 650°C	0	1	0	1	-
0 to 800°C	0	1	1	0	-
0 to 850°C (RTD 850)	0	1	1	1	-
0 to 1000°C	0	1	1	1	-
-10 to 50°C	1	0	0	0	-
-50 to 50°C	1	0	0	1	-
-50 to 100°C	1	0	1	0	-
-50 to 150°C	1	0	1	1	-
-50 to 250°C	1	1	0	0	-
-50 to 350°C	1	1	0	1	-
-200 to 600°C	1	1	1	0	-
Special (Reserved)	1	1	1	1	-

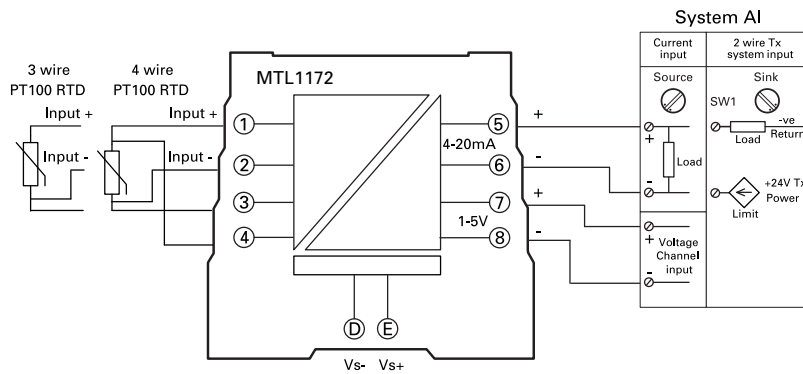
5.3.1 MTL1171 thermocouple input converter

For Type J or K thermocouples. Cold junction compensation is provided by the MTL1171. Switch settings select open wire detection and up/down scale drive.



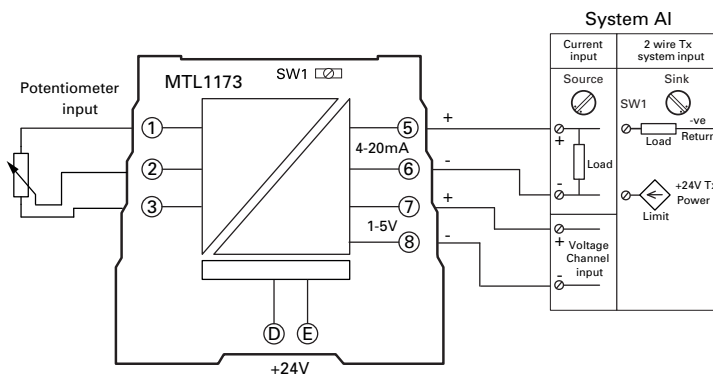
5.3.2 MTL1172 RTD input converter

For PT100 RTD sensors. Switch settings select 3 or 4 wire connection and open wire detection with up/down scale drive.



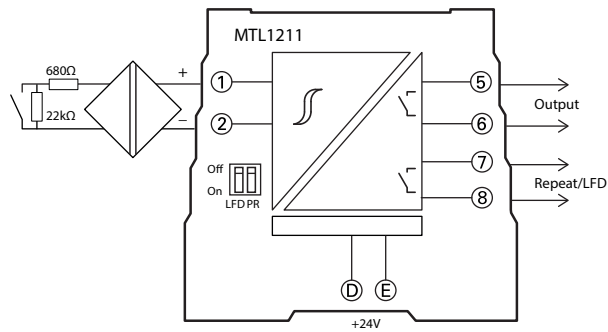
5.3.3 MTL1173 potentiometer input converter

Potentiometer Input. Switch settings select open wire detection with up/down scale drive.



5.4 MTL1211 Switch / Proximity Detector input

Switch or proximity detector isolator with the option to select line fault detection or a repeat output. Switches are used to select phase reversal and the repeat output or LFD alarm output.



5.5 MTL1249 Current / Voltage input/output repeater

The MTL1249 is a single channel signal conditioner which can accept voltage or current inputs and provide a voltage or current output. The signal levels are selected by the user using switches on the module as shown in the table 3.

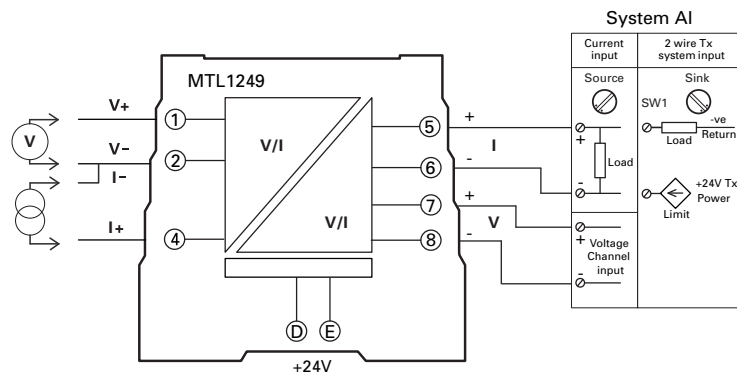


Table 3 MTL1249 Dip Switch settings

INPUT	OUTPUT	DS1	DS2	DS3	DS4	DS5	DS6
0-1V	Loop Powered or 4-20mA	OFF	OFF	OFF	OFF	OFF	OFF
0-5V		ON	OFF	OFF	OFF	OFF	OFF
0-10V		OFF	ON	OFF	OFF	OFF	OFF
1-5V		ON	ON	OFF	OFF	OFF	OFF
0-20mA		OFF	OFF	ON	OFF	OFF	OFF
4-20mA		ON	OFF	ON	OFF	OFF	OFF
0-1V	0-20mA	OFF	ON	ON	OFF	OFF	OFF
0-5V		ON	ON	ON	OFF	OFF	OFF
0-10V		OFF	OFF	OFF	ON	OFF	OFF
1-5V		ON	OFF	OFF	ON	OFF	OFF
0-20mA		OFF	ON	OFF	ON	OFF	OFF
4-20mA		ON	ON	OFF	ON	OFF	OFF
0-1V	0-5V	OFF	OFF	ON	ON	OFF	OFF
0-5V		ON	OFF	ON	ON	OFF	OFF
0-10V		OFF	ON	ON	ON	OFF	OFF
1-5V		ON	ON	ON	ON	OFF	OFF
0-20mA		OFF	OFF	OFF	OFF	ON	OFF
4-20mA		ON	OFF	OFF	OFF	ON	OFF
0-1V	1-5V	OFF	ON	OFF	OFF	ON	OFF
0-5V		ON	ON	OFF	OFF	ON	OFF
0-10V		OFF	OFF	ON	OFF	ON	OFF
1-5V		ON	OFF	ON	OFF	ON	OFF
0-20mA		OFF	ON	ON	OFF	ON	OFF
4-20mA		ON	ON	ON	OFF	ON	OFF
0-1V	0-10V	OFF	OFF	OFF	ON	ON	OFF
0-5V		ON	OFF	OFF	ON	ON	OFF
0-10V		OFF	ON	OFF	ON	ON	OFF
1-5V		ON	ON	OFF	ON	ON	OFF
0-20mA		OFF	OFF	ON	ON	ON	OFF
4-20mA		ON	OFF	ON	ON	ON	OFF
0-1V	2-10V	OFF	ON	ON	ON	ON	OFF
0-5V		ON	ON	ON	ON	ON	OFF
0-10V		OFF	OFF	OFF	OFF	OFF	ON
1-5V		ON	OFF	OFF	OFF	OFF	ON
0-20mA		OFF	ON	OFF	OFF	OFF	ON
4-20mA		ON	ON	OFF	OFF	OFF	ON
0-100mV	4-20mA	OFF	OFF	ON	OFF	OFF	ON
0-100mV	0-20mA	ON	OFF	ON	OFF	OFF	ON
0-100mV	0-5V	OFF	ON	ON	OFF	OFF	ON
0-100mV	1-5V	ON	ON	ON	OFF	OFF	ON
0-100mV	0-10V	OFF	OFF	OFF	ON	OFF	ON
0-100mV	2-10 V	ON	OFF	OFF	ON	OFF	ON

6 MAINTENANCE

Note: Return any isolator identified as faulty to the Eaton's MTL product line or representative from which it was purchased, for repair or replacement.

6.1 Routine maintenance

Occasionally check the general condition of the installation to make sure that no deterioration has occurred. At least once every two years (and more frequently for particularly harsh environments), check that:

- isolators are of the types specified in the relevant documentation.
- isolators are legibly tagged and tag details given comply with the relevant documentation.
- isolators are securely clipped to the DIN rail.
- all cable connections are properly made to the isolators.
- all connecting cables are of the specified type and rating, are correctly routed (particularly when fitted in enclosures), and are not frayed or otherwise damaged.
- all cable screens are properly earthed.
- there is no sign of damage or corrosion.

6.2 Enclosures

When fitted in enclosures the only maintenance needed is cleaning and periodic visual inspections. Clean external surfaces only, using soap and water, do not use chemical solvents or proprietary cleaning fluids. Every year (more frequently in harsh environments), inspect enclosures and check that:

- they are attached securely to their mountings.
- any accumulation of water inside has been removed (using the drain plug, if fitted).
- cable gland nuts are tight.
- there are no signs of any damage.
- all connections are properly made.

7 APPENDIX A

Table 3 Isolator current consumption for MTL1991 calculation @ 24V.

Isolator	Typical load current	Maximum load current
MTL1141	33mA @16mA output	45mA
MTL1142	35mA @16mA output	51mA
MTL1143	50mA @16mA output	71mA
MTL1171	15mA voltage out 35mA current out	40mA
MTL1172	15mA voltage out 35mA current out	40mA
MTL1173	15mA voltage out 35mA current out	40mA
MTL1211	25mA	35mA
MTL1249	38mA	38mA

AUSTRALIA

MTL Instruments Pty Ltd,
10 Kent Road, Mascot, New South Wales, 2020, Australia
Tel: +61 1300 308 374 Fax: +61 1300 308 463
E-mail: mtl-salesanz@eaton.com

BeNeLux

MTL Instruments BV
Ambacht 6, 5301 KW Zaltbommel
The Netherlands
Tel: +31 (0)418 570290 Fax: +31 (0)418 541044
E-mail: mtl.benelux@eaton.com

CHINA

Cooper Electric (Shanghai) Co. Ltd
955 Shengli Road, Heqing Industrial Park
Pudong New Area, Shanghai 201201
Tel: +86 21 2899 3817 Fax: +86 21 2899 3992
E-mail: mtl-cn@eaton.com

FRANCE

MTL Instruments sarl,
7 rue des Rosiéristes, 69410 Champagne au Mont d'Or
France
Tel: +33 (0)4 37 46 16 53 Fax: +33 (0)4 37 46 17 20
E-mail: mtlfrance@eaton.com

GERMANY

MTL Instruments GmbH,
Heinrich-Hertz-Str. 12, 50170 Kerpen, Germany
Tel: +49 (0)22 73 98 12-0 Fax: +49 (0)22 73 98 12-2 00
E-mail: csckerpen@eaton.com

INDIA

MTL India,
No.36, Nehru Street, Off Old Mahabalipuram Road
Sholinganallur, Chennai- 600 119, India
Tel: +91 (0) 44 24501660 /24501857 Fax: +91 (0) 44 24501463
E-mail: mtlindiasales@eaton.com

ITALY

MTL Italia srl,
Via San Bovio, 3, 20090 Segrate, Milano, Italy
Tel: +39 02 959501 Fax: +39 02 95950759
E-mail: chmninfo@eaton.com

JAPAN

Cooper Crouse-Hinds Japan KK,
MT Building 3F, 2-7-5 Shiba Daimon, Minato-ku,
Tokyo, Japan 105-0012
Tel: +81 (0)3 6430 3128 Fax: +81 (0)3 6430 3129
E-mail: mtl-jp@eaton.com

NORWAY

Norex AS
Fekjan 7c, Postboks 147,
N-1378 Nesbru, Norway
Tel: +47 66 77 43 80 Fax: +47 66 84 55 33
E-mail: info@norex.no

RUSSIA

Cooper Industries Russia LLC
Elektrozavodskaya Str 33
Building 4
Moscow 107076, Russia
Tel: +7 (495) 981 3770 Fax: +7 (495) 981 3771
E-mail: mtlrussia@eaton.com

SINGAPORE

Cooper Crouse-Hinds Pte Ltd
No 2 Serangoon North Avenue 5, #06-01 Fu Yu Building
Singapore 554911
Tel: +65 6 645 9888 Fax: +65 6 487 7997
E-mail: sales.mtlsing@eaton.com

SOUTH KOREA

Cooper Crouse-Hinds Korea
7F, Parkland Building 237-11 Nonhyun-dong Gangnam-gu,
Seoul 135-546, South Korea.
Tel: +82 6380 4805 Fax: +82 6380 4839
E-mail: mtl-korea@eaton.com

UNITED ARAB EMIRATES

Cooper Industries/Eaton Corporation
Office 205/206, 2nd Floor SJ Towers, off. Old Airport Road,
Abu Dhabi, United Arab Emirates
Tel: +971 2 44 66 840 Fax: +971 2 44 66 841
E-mail: mtlgulf@eaton.com

UNITED KINGDOM

Eaton Electric Ltd,
Great Marlings, Butterfield, Luton
Beds LU2 8DL
Tel: +44 (0)1582 723633 Fax: +44 (0)1582 422283
E-mail: mtlenquiry@eaton.com

AMERICAS

Cooper Crouse-Hinds MTL Inc.
3413 N. Sam Houston Parkway W.
Suite 200, Houston TX 77086, USA
Tel: +1 281-571-8065 Fax: +1 281-571-8069
E-mail: mtl-us-info@eaton.com